



HATCHES & VENTILATION

Lewmar® Hatches	386-389
CE Regulations	389
Lewmar® Hatch Accessories	390
Lewmar® Portlights	391-393
Lewmar® Flush & Custom Hatches & Portlights	394
Lewmar® Extended Range	394
Lewmar® Spare Parts	395
Jim Black® Hatches	396
Jim Black® Portlights	397
Jim Black® Hatch Accessories	398
Tackle Storage Boxes & Pockets, Storage Cabinets & Boxes	399-400
Access Hatches/Doors, Inspection Panels	401-405
Vents & Cows	406-409
Bilge Blowers & Accessories	410-411
Webasto Air Conditioners	412-414



A blue product code or the appearance of this logo indicates the product requires special ordering. Please contact BLA on **1300 252 725** for information on these products.

Lewmar® Hatches and Portlights

LEWMAR®

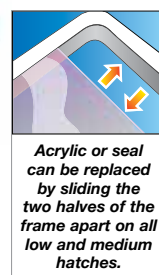
Manufactured in England, the quality range of Lewmar® hatches and portlights offer a huge variety of sizes and styles perfectly suited to both OEM users and the retail replacement market. The Lewmar® range features industry leading construction and are manufactured from silver anodised extruded aluminium fitted with quality acrylic lenses ranging in thickness from 8mm to 12mm.

Lewmar® Hatch - Low Profile

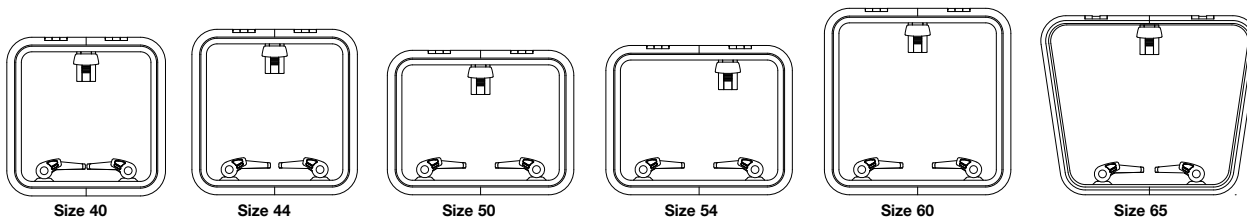
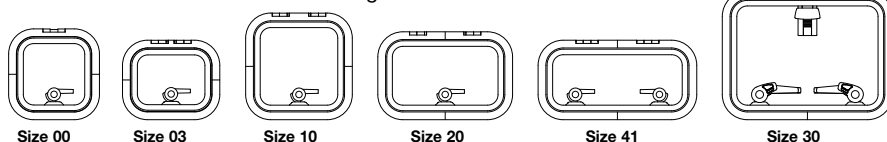
The Low Profile hatch range features a snag free soft styling which presents a sleek modern look. The range is ideal for use on a wide range of power craft and yachts. The smaller ventilation hatches are ideally suited to any deck location over toilets or galleys. The larger Low Profile hatch range can be used as a foredeck hatch on small to mid size power and sailboats. The hatch also features Lewmar's unique sealing system allowing easy acrylic replacement.

Features:

- Size 30 and above feature outside handles
- Ability to quickly and easily replace acrylic lenses
- Ability to lock the hatch fully closed or in the vented position
- Friction hinges hold the lid open in any position up to 95 degrees
- Anodised aluminium frame for corrosion resistance
- Curved upper frame for strength as well as modern styling
- CE Approved for Area 2A
- Available in round and D-Hatch configuration

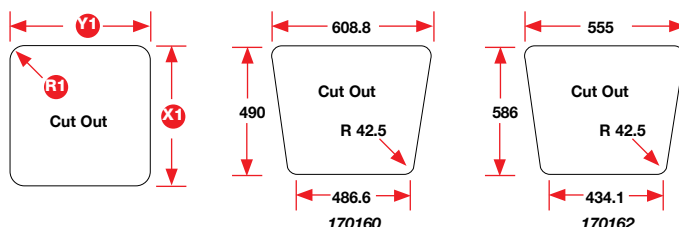
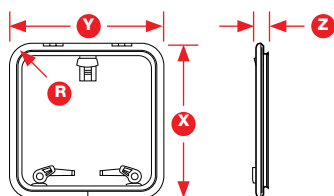


Acrylic or seal can be replaced by sliding the two halves of the frame apart on all low and medium hatches.



Low Profile Hatch Dimensions

Low Profile Hatch Cut Out s



BLA Code	BLA Code	Size	Outside X x Y L x W mm	Cut Out X1 x Y1 L x W mm	Radii R	Radii R1	Height Z	Acrylic	Internal Trim Kit & Insect Screen	Internal Trim Kit Colour	Insect Screen Only to Suit
170050	-	00	281 x 281	211 x 211	72.5	42.5	25	8	170200	White	170240
170052	-	03	246 x 301	176 x 231	72.5	42.5	25	8	170202	White	170241
170054	170056	10	330 x 330	260 x 260	72.5	42.5	25	8	170204	White	170242
170058	-	20	272 x 417	202 x 347	72.5	42.5	25	8	170208	White	170246
170060	170062	30	397 x 527	327 x 457	72.5	42.5	25	8	170214	White	170250
170064	170066	40	491 x 491	421 x 421	72.5	42.5	25	8	170216	White	170252
170068	-	41	246 x 491	176 x 421	72.5	42.5	25	8	170218	White	170254
170070	170072	44	512 x 512	442 x 442	72.5	42.5	25	8	170220	White	170256
170074	170076	50	447 x 577	377 x 507	72.5	42.5	25	8	170222	White	170258
170078	170080	54	462 x 577	392 x 507	72.5	42.5	25	8	170226	White	170262
170082	170084	60	577 x 577	507 x 507	72.5	42.5	25	10	170228	White	170264
170160	-	65	560 x 675 x 560	490 x 608.8 x 486.6	72.5	42.5	25	10	170230	White	170266
170162	-	65	658.3 x 629 x 504.5	586 x 555 x 434.1	72.5	42.5	25	10	-	-	-

N.B. Insect screens can only be used with trim kits. Trims also available in Ivory.

Accessories:

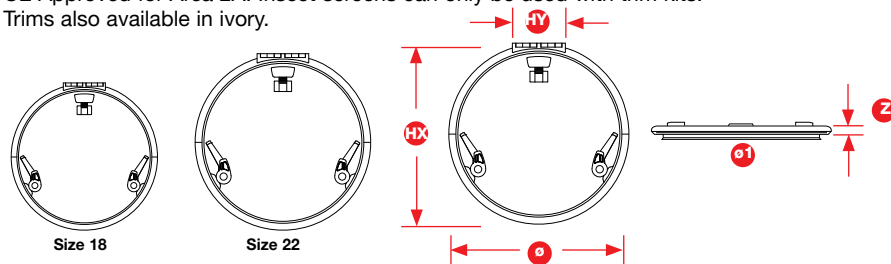
172180	Handle Kit Small - LH	SP17170280	Joining Insert
172181	Handle Kit Small - RH	SP17170292	Hinge Kit (Friction)
172196	Large Handle Kit Size 30+	SP17170268	Friction Lever
SP17170260	Catch Block	SP17170296	Hinge Caps x10
SP17170266	Large Gasket Friction Lever	SP17170376	Handle Hatch External LP MP (Pair)

- To order replacement Acrylic with Seal, please contact BLA on **1300 252 725** with the following information:
Hatch overall size W x L x H
Serial Number embossed in the acrylic
Friction Lever or Telescopic Stay type

Lewmar® Hatch - Round Low Profile

Lewmar's Round Low Profile hatch range offers foredeck hatch solutions with no corners to catch sails as they are pulled in from below deck.

CE Approved for Area 2A. Insect screens can only be used with trim kits. Trims also available in Ivory.



Low Profile Hatch Dimension and Cut Out

BLA Code	Size	Outside Ø Diameter mm	Cut Out Ø1 Diameter mm	Hinge Length HX mm	Hinge Width HY mm	Height Z mm	Acrylic mm	Internal Trim Kit & Insect Screen	Trim Colour	Insect Screen Only to Suit
170164	18	490	420	493	141	25	8	170206	White	170244
170166	22	588	518	591	173	25	10	170212	White	170248
								170213	Ivory	170248

Spare Parts:

SP17170288 Joining Insert t/s Round & D Low Profile



Acrylic or seal can be replaced by sliding the two halves of the frame apart on all low and medium hatches.

Lewmar® Hatch - Medium Profile

Manufactured to exacting standards, the Lewmar® Medium Profile range provides a smooth profile with modern lines, similar to the Low Profile range. The hatch has been designed with deeper frame sections for greater strength and thicker acrylic for durability. The Medium Profile hatches include Lewmar's unique sealing system which allows for easy acrylic replacement if ever required. Ideal as a foredeck hatch on larger cruisers and offshore yachts.

Features:

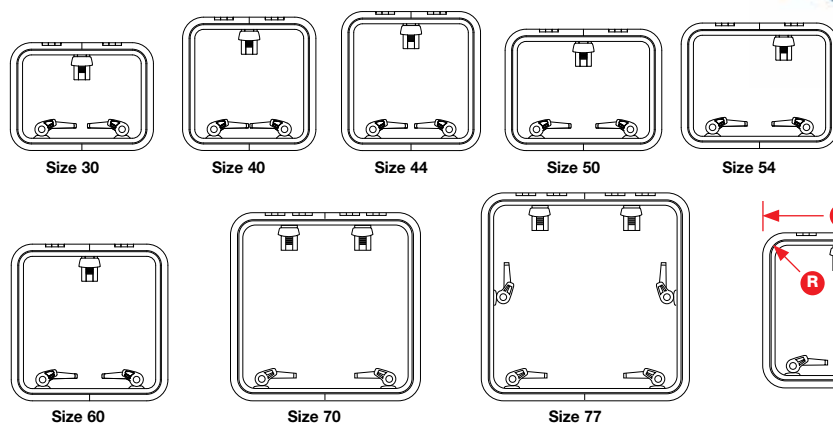
- Outside handles
- Ability to lock the hatch fully closed or in the vented position
- Ability to quickly and easily replace acrylic lens
- Friction levers hold the lid open in any position up to 95°
- Anodised aluminium frame for corrosion resistance
- Curved upper frame for strength as well as modern styling
- CE approved to Area 2A



Acrylic or seal can be replaced by sliding the two halves of the frame apart on all low and medium hatches.



Hatch Seal



Medium Profile Hatch Dimensions and Cut Out

BLA Code	BLA Code Friction Hinge	BLA Code with Stay	Size	Outside X x Y L x W mm	Cut Out X1 x Y1 L x W mm	Radii R mm	Radii R1 mm	Height Z mm	Acrylic mm	Internal Trim Kit & Insect Screen	Internal Trim Kit Colour	Insect Screen Only to Suit
170094	-	-	30	398 x 528	327 x 457	78	42.5	32	12	170214	White	170250
170096	-	-	40	492 x 492	421 x 421	78	42.5	32	12	170216	White	170252
170098	-	-	44	513 x 513	442 x 442	78	42.5	32	12	170220	White	170256
170100	-	-	50	448 x 578	377 x 507	78	42.5	32	12	170222	White	170258
170102	-	-	54	463 x 578	392 x 507	78	42.5	32	12	170226	White	170262
170104	-	-	60	578 x 578	507 x 507	78	42.5	32	12	170228	White	170264
170106	170108	-	70	698 x 698	627 x 627	78	42.5	32	12	170232	White	170268
170110	-	-	77	770 x 770	699 x 699	78	42.5	32	12	-	-	-

N.B. Insect screens can only be used with trim kits. Trims also available in Ivory

Accessories:

172196	Large Handle Kit Size 30+	SP17170292	Hinge Kit (Friction)
SP17170260	Catch Block	SP17170268	Friction Lever
SP17170280	Joining Insert	SP17170296	Hinge Caps x10
SP17170266	Large Gasket Friction Lever	SP17170376	Handle Hatch External LP MP (Pair)

- To order replacement Acrylic with Seal, please contact BLA on 1300 252 725 with the following information:

Hatch overall size W x L x H

Serial Number embossed in the acrylic

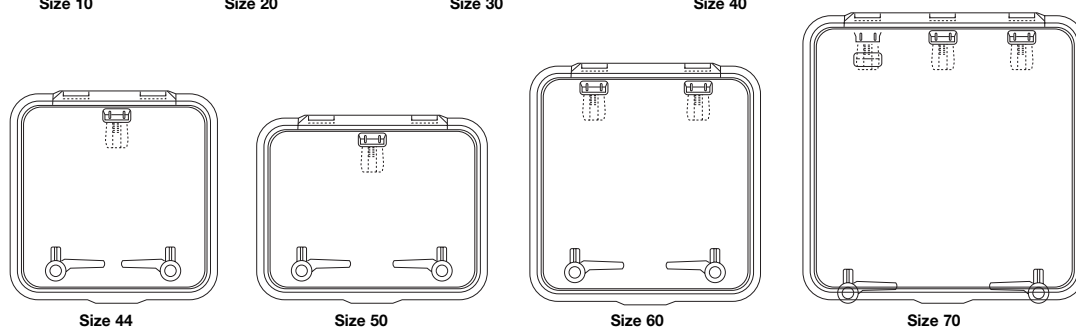
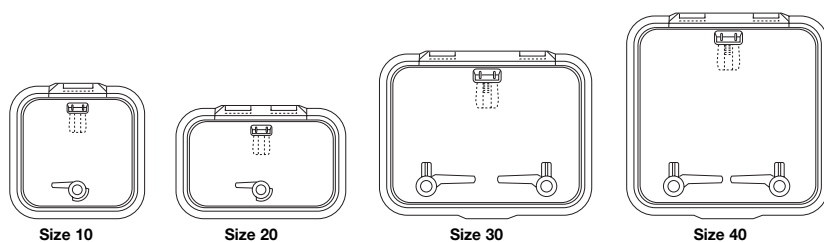
Friction Lever or Telescopic Stay type

Lewmar® Hatch - Ocean

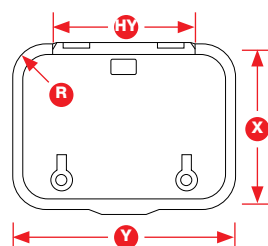
The Ocean hatch range are a traditional styled deck hatch with a heavy duty aluminium frame; available with or without internal flange. Manufactured to exacting standards, the Ocean hatch range has been fitted to thousands of boats worldwide. Designed to provide offshore cruisers and yachts the ultimate in durability, strength, safety and protection. The Ocean hatch has been engineered with deeper frame sections for greater strength and utilises thick acrylic for durability.

Features:

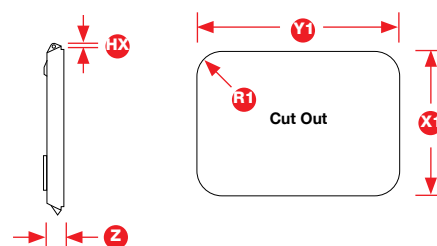
- Outside handles
- Ability to lock the hatch fully closed or in the vented position
- Friction levers hold the lid open in any position up to 95°
- Anodised aluminium frame for corrosion resistance
- Available with flat base or internal flange
- CE approved for Area 2A

LEWMAR®


Ocean Hatch Dimensions



Ocean Hatch Cut Out



BLA Code	Base Type	Size	Outside X x Y L x W mm	Cut Out X1 x Y1 L x W mm	Radii R mm	Radii R1 mm	Height Z mm	Acrylic mm	Hinge Length HX mm	Hinge Length HY mm	Internal Trim Kit & Insect Screen	Trim Colour	Insect Screen Only to Suit
170114	Flat	10	324 x 324	255 x 255	75	40	39.5	10	5	138	-	-	-
170115	Flange	10	324 x 324	260 x 260	75	42.5	39.5	10	5	138	170204	White	170242
170116	Flat	20	266 x 411	197 x 342	69	34	39.5	10	5	225	-	-	-
170117	Flange	20	266 x 411	202 x 347	69	36.5	39.5	10	5	225	170210	White	170246
170118	Flat	30	391 x 521	322 x 452	75	40	39.5	10	5	335	-	-	-
170119	Flange	30	391 x 521	327 x 457	75	42.5	39.5	10	5	335	170214	White	170250
170120	Flat	40	485 x 485	416 x 416	75	40	39.5	10	5	299	-	-	-
170121	Flange	40	485 x 485	421 x 421	75	42.5	39.5	10	5	299	170216	White	170252
170122	Flat	44	509 x 509	437 x 437	76	40	43	12	4	302	-	-	-
170123	Flange	44	509 x 509	442 x 442	76	42.5	43	12	4	302	170220	White	170256
170132	Flat	50	444 x 574	372 x 502	76	40	43	12	4	367	-	-	-
170133	Flange	50	444 x 574	377 x 507	76	42.5	43	12	4	367	170222	White	170258
170134	Flat	60	574 x 574	502 x 502	76	40	43	12	4	367	-	-	-
170135	Flange	60	574 x 574	507 x 507	76	42.5	43	12	4	367	170228	White	170264
170136	Flat	70	694 x 694	622 x 622	76	40	43	12	4	487	-	-	-
170137	Flange	70	694 x 694	627 x 627	76	42.5	43	12	4	487	170232	White	170268

N.B. Trim kits can not be used with flat base hatch. Insect screen can only be used with trims. Trim kits also available in ivory.

Accessories:

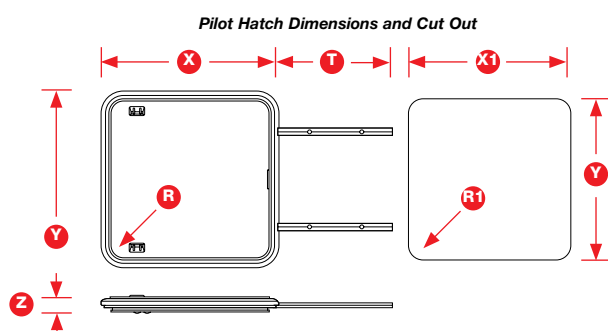
172196	Large Handle Kit Size 30+	SP17170302	Friction Lever 30-40
172180	Small Handle Kit Size 10 and 20	SP17170304	Friction Lever 50-77
SP17170300	Friction Lever 00-20	SP17170262	Catch Block
		SP17170368	Outside Handle (Pair)

Lewmar® Hatch - Pilot

Lewmar's Pilot hatch range has been designed for use in areas such as above helm positions, cockpit roofs or fly-bridge areas. Complementary styling cues have been taken from the Low and Medium Profile hatch range to create a harmonious look.

Features:

- Opens up and ventilates enclosed areas
- Conveniently placed opening handlebar mechanism which rotates to seal down the hatch
- Sliding technology from Lewmar's racing hardware track systems, ensuring minimum friction
- CE approved for Area 3



BLA Code	Size	Frame Colour	Lower Frame Flange	Outside X x Y L x W mm	Cut Out X1 x Y1 L x W mm	Radii R mm	Radii R1 mm	Height Z mm	Acrylic Colour Tint	Acrylic mm	Track Length mm
170170	40	Silver	15	465 x 491	421 x 421	72.5	42.5	29	Grey	10	284
170172	60	Silver	15	581 x 577	507 x 507	72.5	42.5	29	Grey	10	373
170173	70	Silver	15	701 x 697	625 x 625	72.5	42.5	29	Grey	10	485
170174	78	Silver	15	844 x 790	770 x 720	72.5	42.5	29	Grey	10	638
170175	78	White	15	844 x 790	770 x 720	72.5	42.5	29	Grey	10	638

Accessories:

SP17170241 Track Cam Block & Track Follower

CE Regulations

The CE Regulations apply to craft up to 25m in length. Although the regulations may not apply to Australia, they are a useful guide for small craft. The regulations have design categories for boats based on their intended usage and propulsion (sail or power).

All Lewmar® hatches and portlights are for design category A (Ocean Sailing) or design category B (Offshore Sailing). The regulations divide up the hull and deck into four specific areas which are shown below.

For craft with a freeboard greater than $\frac{1}{12}$ th of its overall length, the hull is split into Area 1 and Area 2B. A product that is suitable for fitting to an area for which it is approved is suitable for all the areas below its category.

Area 1 Motor Craft



Sailing Monohull



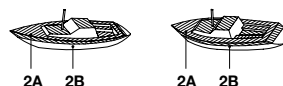
Sailing Multihull



Area 2 Motor Craft



Sailing Monohull



Sailing Multihull



Area 3 Motor Craft



Sailing Monohull



Sailing Multihull



Area 4 Motor Craft



Sailing Monohull



Sailing Multihull



Lewmar® Hatch Accessories

BLA stocks a range of popular spare parts for replacement, including hatch seal kits, replacement acrylics, spare handles, hinge kits and friction levers. However, due to the vast variety within the Lewmar® range there will inevitably be spare parts that will need to be sourced from Lewmar®. Please contact BLA on **1300 252 725** or your Territory Manager directly if you cannot find the item you are looking for.

LEWMAR®

Lewmar® ABS Plastic Trim and Flyscreen

- Easy and stylish way of finishing a hatch installation inside the cabin
- Trim kits come complete with an insect screen
- Can only be fitted to boats with a headliner
- Cannot be used on flat base Ocean hatches
- Makes it easier to access the handles when the insect screen is in place
- Only necessary to undo two tabs and the insect screen will hinge down—and not fall out
- Insect screen can be removed and stowed separately if required
- Hinges also available as retro fit items

Cut Out Dimensions and Deck Thickness Requirements

Cut Out Dimension Increase	Add 4mm to X1 & Y1 and 2mm to R1
Ocean	Min Hull Thickness = 25mm Max Hull Thickness = 72mm
Low and Medium Profile	Min Hull Thickness = 15mm Max Hull Thickness = 62mm

BLA Code	Colour
171120	White
SP17170226	Ivory

Spare Parts:

SP17170110 HA Wht Tabs & Screws (Bag of 8)


LEWMAR®

Lewmar® Retro-Fit Telescopic Hatch Stay

Features excellent lid positioning and rigid control. The stay allows hatch opening up to 95°. Fitting the stay requires drilling holes in the hatch lens. Full instructions and templates are provided.

BLA Code
172150


LEWMAR®

Lewmar® Retro-Fit Vent

Manufactured from composite plastic for strength and durability, the Lewmar® air vent allows the exchange of stale cabin air while preventing water ingress. The vent can be fitted to any Lewmar® hatch or to a deck to a thickness of 100mm. Styled to match the Low and Medium profile hatches they include a captive bung to close the ventilator, which is leak tested. Simple installation with no sealant required.

BLA Code
172156
172157



Lewmar® Retro-Fit Lock and Key Kit

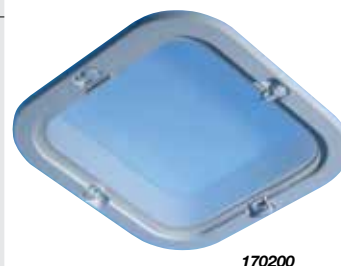
For security a simple lock and key set can be installed on any Lewmar® hatch by simply drilling through the acrylic and riveting a catch block to the lower hatch frame. All components are designed and manufactured for the harsh marine environment.

BLA Code
172160



Lewmar® Hatch Trim Kit with Insect Screen

Size	Trim Colour White	Trim Colour Ivory
00	170200	170201
03	170202	170203
10	170204	170205
18 Round	170206	170207
20*	170208	170209
20 Ocean	170210	170211
22 Round	170212	170213
30	170214	170215
40	170216	170217
41	170218	170219
44	170220	170221
50	170222	170223
54	170226	170225
60	170228	170229
65	170230	170227
70	170232	170231



170200

* Low and Medium Profile only

Lewmar® Insect Screen Only to fit trim Kit

Size	BLA Code
00	170240
03	170241
10	170242
18	170244
20	170246
22	170248
30	170250
40	170252
41	170254
44	170256
50	170258
54	170262
60	170264
65	170266
70	170268



170242

Lewmar® Portlights

Sold throughout the world, the Lewmar® range of opening and fixed portlights are ideal for anything from small powerboats to larger cruisers, trailer sailers to ocean going yachts. Lewmar® has designed and manufactured a range of portlights that are finished to the highest quality using anodised aluminium, stainless steel and acrylic. Features include opening portlights fitted with built in friction hinges and quick and secure locking handles. Simple ring type installation with threaded holes make mounting the portlight a simple one person operation.

Lewmar® Portlight - Standard

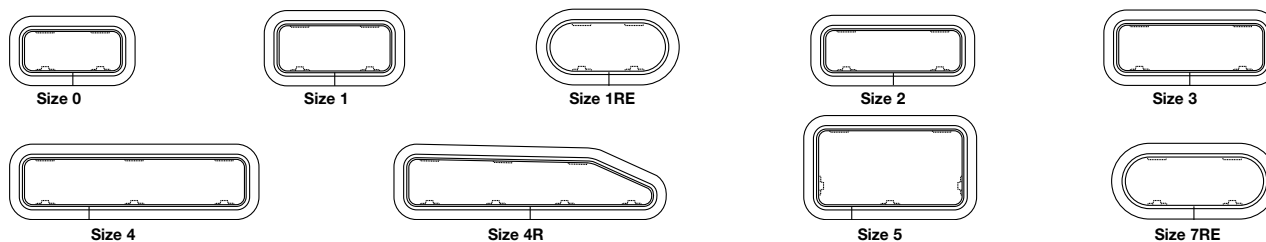
The Standard Portlight sets the benchmark and is used in many of the world's production sail and power boats. The ease of installation and reliable finish make it popular for fitting into production boats, one off boat builds or as an addition or replacement in an existing boat.

Features:

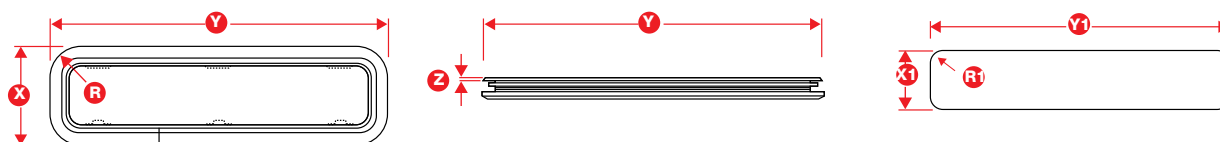
- Industry setting standard
- Aluminium outside frame, clean styling
- Handles and hinges are fitted to the edge of the lens to allow clear visibility
- Easily fitted by clamping cabin sides between inner and outer frame provided
ABS plastic trim and insect screen available in white or ivory
(no insect screen on 4R/4L)
- Friction hinges hold the window open
- CE Approved for Area 2A
- Also available in fixed version



Insect Screen



Standard Portlight Dimensions and Cut Out



BLA Code	Size	Version	Trim Colour	Acrylic Colour	Outside X x Y L x W mm	Cut Out X1 x Y1 L x W mm	Radii R mm	Radii R1 mm	Height Z mm	Acrylic mm
171020	0	Opening	White	Grey	176 x 323	156 x 303	62	52	4	6
171021	0	Opening	Ivory	Grey	176 x 323	156 x 303	62	52	4	6
171022	0	Opening	Ivory	Clear	176 x 323	156 x 303	62	52	4	6
171024	1	Opening	White	Grey	191 x 367	171 x 347	62	52	4	6
171026	1	Opening	Ivory	Grey	191 x 367	171 x 347	62	52	4	6
171032	1RE	Opening	Ivory	Grey	191 x 367	171 x 347	95.5	85.5	4	8
171034	2	Opening	White	Grey	176 x 425	156 x 405	62	52	4	8
171036	2	Opening	Ivory	Grey	176 x 425	156 x 405	62	52	4	8
171037	2	Opening	Ivory	Clear	176 x 425	156 x 405	62	52	4	8
171038	3	Opening	White	Grey	191 x 449	171 x 429	62	52	4	10
171039	3	Opening	Ivory	Grey	191 x 449	171 x 429	62	52	4	10
171040	4	Opening	White	Grey	191 x 646	171 x 626	62	52	4	8
171041	4	Opening	Ivory	Grey	191 x 646	171 x 626	62	52	4	8
171042	4R	Opening	White	Grey	195 x 708	175 x 688	62	52	4	8
171043	4R	Opening	Ivory	Grey	195 x 708	175 x 688	62	52	4	8
171044	4L	Opening	White	Grey	195 x 708	175 x 688	62	52	4	8
171048	5	Opening	White	Grey	264 x 449	244 x 429	62	52	4	10
171050	7RE	Opening	White	Grey	191 x 425	171 x 405	95.5	85.5	4	8

N.B. Standard portlights are also available in fixed versions.

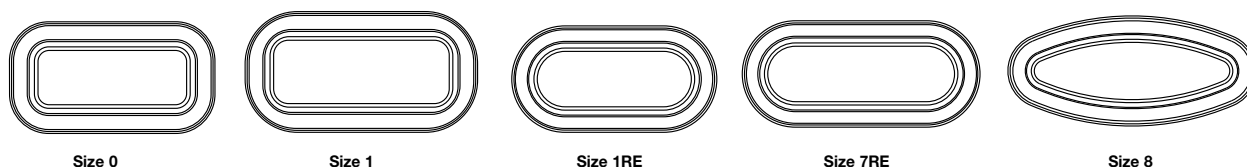
Lewmar® Portlight - Stainless Steel

LEWMAR®

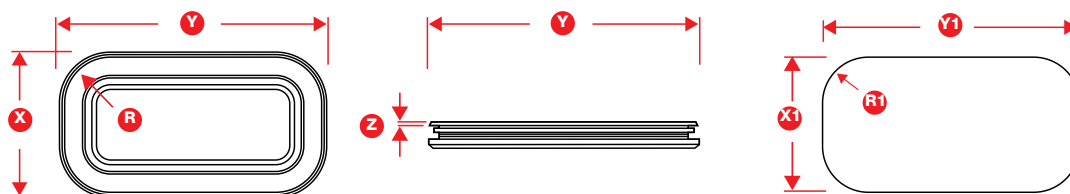
Manufactured from mirror polished stainless steel, these portlights are supplied fitted with friction hinges and low profile handles. The portlights present a modern clean look, thanks to the hinge positioning and integrated handles which allow a clear view. This range can be installed on 9mm to 30mm thick surfaces.

Features:

- Join-less polished stainless steel outer frame
- Handles and hinges are fitted to the outer edge of the lens for unobstructed visibility
- Quick action closing handles
- Friction hinges to hold the smoked acrylic window open
- White ABS trim (Chrome for size 8), including insect screen
- CE Approved for Area 2A



Stainless Steel Portlight Dimensions and Cut Out



BLA Code	Size	Version	Trim Colour	Outside X x Y L x W mm	Cut Out X1 x Y1 L x W mm	Radii R mm	Radii R1 mm	Height Z mm	Acrylic mm
170980	0	Opening	White	176 x 323	156 x 303	62	52	4	8
170981	0	Fixed	White	176 x 323	156 x 303	62	52	4	10
170982	1	Opening	White	191 x 367	171 x 347	62	52	4	8
170983	1	Fixed	White	191 x 367	171 x 347	62	52	4	10
170984	1RE	Opening	White	191 x 367	171 x 347	95.5	85.5	4	10
170990	1RE	Fixed	White	191 x 367	171 x 347	95.5	85.5	4	10
170986	7RE	Opening	White	191 x 425	171 x 405	95.5	85.5	4	10
170987	7RE	Fixed	White	191 x 425	171 x 405	95.5	85.5	4	10
170988	8	Opening	Chrome	196 x 452	Refer Instructions	N/A	-	4	10
170989	8	Fixed	Chrome	196 x 452	Refer Instructions	N/A	-	4	10

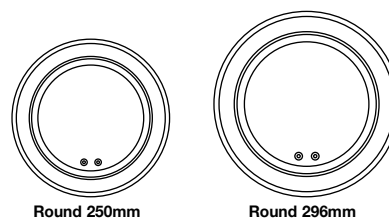
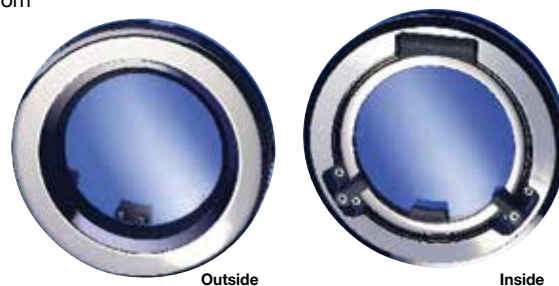
Lewmar® Portlight - Round Stainless Steel

LEWMAR®

Manufactured from mirror polished AISI 316 grade stainless steel, these portlights are supplied fitted with friction hinges and low profile handles. Internal trim is made of chrome ABS. Smoke grey acrylic window. Fits thicknesses from 8mm to 24mm and features a full 180° opening.

Features:

- Join-less polished stainless steel outer frame
- Handles and hinges are fitted to the outer edge of the lens for unobstructed visibility
- Quick action closing handles
- Friction hinges to hold the smoked acrylic window open
- Chrome ABS trim included
- CE Approved for Area 1B



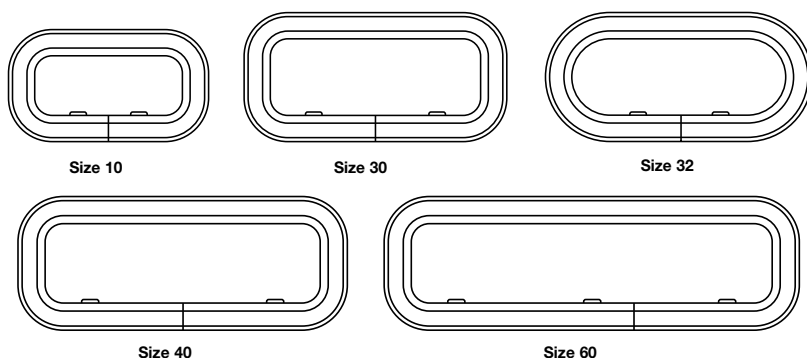
BLA Code	Version	Trim Colour	Overall Diameter mm	Acrylic mm
171006	Opening	Chrome	250	10
171008	Opening	Chrome	296	10

Lewmar® Portlight - Atlantic

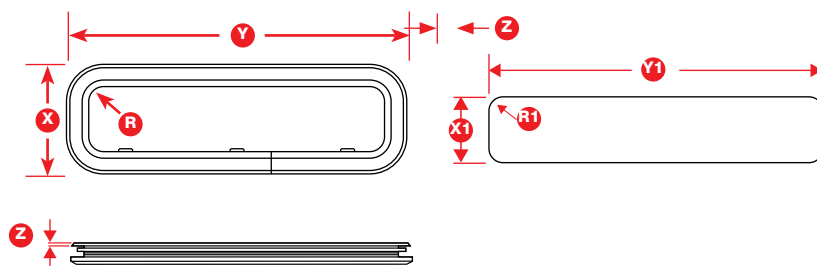
Designed with strength and functionality in mind, Lewmar's Atlantic range of portlights feature inner and outer extruded aluminium frames, which have been deep anodised for additional corrosion resistance. Other important design highlights include an exterior shape to allow water to drain away even when mounted on an angled coach roof, preventing water entering the cabin when opening the portlight. Opening and fixed versions are available as well as optional thick valance version. Supplied complete with insect screen.

Features:

- Strong aluminium outer frame with single welded joint
- Lens bonded into alloy frame for additional stiffness
- Metal handles
- Anodised aluminium interior finish
- Friction hinges hold the window open
- CE Approved for Area 2A



Atlantic Portlight Dimensions and Cut Out



Hull Thickness mm	Valance Type
8-15	Thin Hull Valance
16-24	Thick Hull Valance

BLA Code	Size	Version	Hull Thickness mm	Acrylic Colour	Outside X x Y L x W mm	Cut Out X1 x Y1 L x W mm	Radii R mm	Radii R1 mm	Height Z mm	Acrylic mm
171053	10	Opening	16-24	Grey	174 x 304	154 x 284	71.0	61.0	6	8
171054	10	Opening	8-15	Grey	174 x 304	154 x 284	71.0	61.0	6	8
171055	30	Opening	16-24	Grey	200 x 400	180 x 380	71.0	61.0	6	8
171056	30	Opening	8-15	Grey	200 x 400	180 x 380	71.0	61.0	6	8
171058	32	Opening	8-15	Grey	198 x 401	178 x 381	99.0	89.0	6	8
171059	32	Opening	16-24	Grey	198 x 401	178 x 381	99.0	89.0	6	8
171060	40	Opening	16-24	Grey	200 x 480	180 x 460	71.0	61.0	6	8
171061	40	Opening	8-15	Grey	200 x 480	180 x 460	71.0	61.0	6	8
171062	60	Opening	16-24	Grey	200 x 600	180 x 580	71.0	61.0	6	8
171063	60	Opening	8-15	Grey	200 x 600	180 x 580	71.0	61.0	6	8

Lewmar® Flush and Custom Hatches and Portlights

Lewmar® create a broad range of hatch and portlight products to suit both do-it-yourself installation as well as for the world's production and custom boat building companies. Products such as the Flush hatch range can be supplied with different handle configuration and types, a number of acrylic and frame colour options as well as custom sizes (minimum order quantity may apply). Likewise, Lewmar® Flush Mitre Portlight can be made in a variety of sizes, acrylic and frame colour. New additions and future products include a Curved Foredeck Hatch and more. Flush products are fitted on most Beneteaus, Bavarias, Hanses and other European volume builders as standard. For more information on what Lewmar® can do in the way of custom hatch and portlight products, contact BLA on **1300 252 725**.

LEWMAR®


Lewmar® Extended Range

Lewmar® are constantly developing new products to complement their varied range of marine gear. Every sector of Lewmar's product range has seen new products added to it over the years and many new products are yet to come. Lewmar® produce a number of "high end" products for grand prix race boats, super yachts, both power and sail. Likewise, there are many spare parts and accessories available for current and older Lewmar® products. While it may not appear in the BLA catalogue, if there is a particular size or specification of a product which may be of interest to you, please feel free to contact BLA on **1300 252 725** for current availability. BLA are able to supply anything Lewmar® currently produce and can provide more information on any Lewmar® product which may not appear in the BLA catalogue.

LEWMAR®


Lewmar® Spare Parts - Hatch Seal Kits

LEWMAR®

Low Profile Hatch



Medium Profile Hatch



Ocean Profile Hatch



Flange

Flat

Hatch Size	BLA Code
00	SP17170050
03	SP17170051
10	SP17170052
18	SP17170053
20	SP17170054
22	SP17170056
30	SP17170057
40	SP17170058
41	SP17170059
44	SP17170060
50	SP17170061
54	SP17170062
60	SP17170063
65	SP17170065

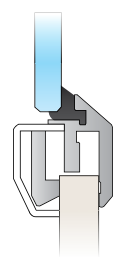
Hatch Size	BLA Code
30	SP17170080
40	SP17170081
44	SP17170082
50	SP17170083
54	SP17170084
60	SP17170085
70	SP17170087
77	SP17170088

Hatch Size	BLA Code
10	SP17170095
20	SP17170096
30	SP17170097
40	SP17170098
44	SP17170099
50	SP17170100
54	SP17170101
60	SP17170102
65	SP17170104
70	SP17170106

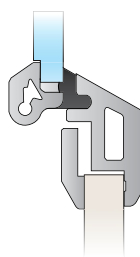
Lewmar® Spare Parts - Portlight Seal Kits

LEWMAR®

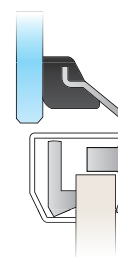
New Standard



Atlantic



Stainless



Standard Portlight Size	BLA Code
0	SP171700354
1	SP171700355
1RE	SP17170136
2	SP171700356
3	SP171700357
4	SP171700358
4L/4R	SP171700359
5	SP171700360
7RE	SP17170377

Atlantic Portlight Size	BLA Code
10	SP17170150
30	SP17170152
32	SP17170154
40	SP17170155
60	SP17170375

Stainless Steel Size	BLA Code
0	SP17170164
1	SP17170166
1RE	SP17170168
7RE	SP17170170
8	SP17170172

Lewmar® Spare Parts - Insect Screens

LEWMAR®



171100



171116



171111

To Suit Standard Portlight

To Suit Stainless Portlight

To Suit Atlantic Portlight

Size	BLA Code
0	171100
1	171102
1RE	171174
2	171104
3	171106
4	171108
4L/4R	171176
5	171182
7RE	171184

Size	BLA Code
0	171210
1	171212
1RE	171214
7RE	171220
8	171116

Size	BLA Code
10	171190
30	171110
32	171111
40	171196
60	171198

Jim Black® Hatches and Portlights

Jim Black
& Associates

Jim Black® Ventilation Hatches

A range of low profile white ventilation hatches featuring high impact U.V. resistant Saralon resin moulded frames which resist warping and are impervious to harsh chemicals such as acetone. The 6mm light bronze finished tempered glass lens offers extreme strength and durability and is moulded into the frame to help protect against water intrusion and lens separation.

Ventilation hatches are fitted with an adjustable strut with a friction locking knob, allowing the hatch to be held at the desired angle plus internal closing handles for security. The heavy duty hinge system and strut design also allows the hatch to be opened 180° for a lay-flat effect. The deck frame features a hidden fastening design when closed and utilises stainless steel hardware where appropriate. All hatches have a 25mm internal flange and are supplied complete with matching trim ring with insect screens available separately.

Features:

- U.V. stabilised Saralon resin moulded frames
- Chemical resistant
- 50mm hollow core seal
- 6mm tempered glass for strength and clarity
- Supplied with matching internal trim ring
- CE certified



170710



170712



BLA Code	Outside mm	Inside mm	Cut Out mm	Opening Angle	Insect Screen to Suit
170710	299 x 299	232 x 232	258 x 258	180°	170930
170712	381 x 521	315 x 442	343 x 470	180°	170932

Jim Black® Hatches

A range of low profile white escape hatches designed for the harsh marine environment featuring high impact U.V. resistant Saralon resin moulded frames which resist warping and are impervious to harsh chemicals. The light bronze finished 6mm tempered glass lens offers extreme strength and durability and is moulded into the frame to help protect against water intrusion and lens separation. Additionally, each hatch lid has a heavy duty hollow, wide, deep seal which provides excellent protection against water ingress.

All hatches are fitted with an adjustable strut with friction locking knob, allowing them to be held at the desired angle. The heavy duty hinge system and strut design also allows the hatches to be opened 180° for a lay-flat effect.

Each hatch has internal/external closing handles fitted as standard which include a simple integrated internal locking security system. The deck frame features a hidden fastening design when closed and utilises stainless steel hardware where appropriate. All hatches have a 25mm internal flange and are supplied complete with matching trim ring with an insect screen available to suit 170720 only.

Feature:

- U.V. stabilised Saralon resin moulded frames
- Chemical resistant
- 50mm hollow core seal
- 6mm tempered glass for strength and clarity
- Matching trim ring
- CE certified
- Hatches include internal/external handles



170730



170720



170722



BLA Code	Shape	Colour	Outside mm	Inside mm	Cut Out mm	Insect Screen to Suit
170720	Square	White	496 x 496	416 x 416	445 x 445	170934
170721	Square	Black	496 x 496	416 x 416	445 x 445	170934
170722	Square	White	575 x 575	489 x 489	521 x 521	N/A
170723	Square	Black	575 x 575	489 x 489	521 x 521	N/A
170730	Round	White	572	489	521	N/A

Jim Black® Rectangular Opening Portlights

A range of white portlights featuring high impact U.V. resistant Saralon resin moulded frames which resist warping and are impervious to harsh chemicals. The light bronze finished 6mm tempered glass lens offers extreme strength and durability and is moulded into the frame to help protect against water intrusion and lens separation.

Each portlight features a strong friction hinge which holds the port window open at a chosen position. Robust quick action friction locking tabs secure the lens frame against the inset seal to prevent water ingress. Supplied complete with matching trim ring flange and insect screen.

Features:

- U.V. stabilised Saralon resin moulded frames
- Chemical resistant
- Custom seal prevents water ingress
- 6mm tempered glass for strength and clarity
- Supplied with matching internal trim ring
- CE certified
- Includes insect screen



171470



171474

BLA Code	Shape	Outside mm	Inside mm	Cut Out mm	Max. Hull Thickness mm
171470	Rectangular	146 x 318	67 x 241	88 x 254	25
171474	Rectangular	169 x 413	102 x 343	113 x 355	25



Jim Black® Elliptical Opening Portlights - Stainless Steel Trim

A range of white portlights featuring high impact U.V. resistant Saralon resin moulded frames which resist warping and are impervious to harsh chemicals. The light bronze finished 6mm tempered glass lens offers extreme strength and durability and is moulded into the frame to help protect against water intrusion and lens separation.

Each portlight is supplied with an external stainless steel trim ring and features a strong friction hinge which holds the port window open at a chosen position. Robust quick action friction locking tabs secure the lens frame against the inset seal to prevent water ingress. Supplied complete with matching trim ring flange and insect screen.

Features:

- U.V. stabilised Saralon resin moulded frames
- Chemical resistant
- Custom seal prevents water ingress
- 6mm tempered glass for strength and clarity
- Attractive stainless steel external trim ring
- CE certified
- Includes insect screen



171506



171508

BLA Code	Shape	Outside mm	Inside mm	Cut Out mm	Max. Hull Thickness mm
171506	Elliptical	159 x 464	77 x 381	97 x 398	19
171508	Elliptical	201 x 470	127 x 413	153 x 443	35



Jim Black® Insect Screens

Range of insect screens to suit popular Jim Black® vents and hatches. Fine mesh design protects against most insects while robust outer flange provides support. Simple locking tabs keep screens securely in place.

Jim Black
& Associates



170930

BLA Code	Description
170930	Insect screen to suit 232 x 232 vent hatch 170710
170932	Insect screen to suit 315 x 442 vent hatch 170712
170934	Insect screen to suit 416 x 416 hatch 170720/721

Jim Black® Replacement Locking Handles

Replacement internal/external locking handle kit to suit Jim Black® escape hatches. Kit includes one internal handle with locking mechanism, one external handle, fastener and seal. Sold individually. Suits **170720, 170721, 170722, 170723, 170730**.

Jim Black
& Associates



BLA Code	Description
170784	Replacement external/internal locking handle kit

Jim Black® Replacement Handles

Replacement handles to suit Jim Black® escape hatches, manufactured from tough high impact, U.V. resistant Saralon. Sold each, left or right hand opening. Suits **170710, 170712**.

Jim Black
& Associates



170780



170781

BLA Code	Description
170780	Right hand internal handle to suit all vent hatches
170781	Left hand internal handle to suit all vent hatches

Hatch Seal

Black polyethylene foam tape with acrylic self adhesive backing. Sizes available to suit most hatch sealing applications. Density - 45kg/m³.



BLA Code	Size	BLA Code	Size
172084	3mm x 12mm x 25m	172102	6mm x 24mm x 15m
172086	3mm x 15mm x 25m	172104	6mm x 36mm x 15m
172088	3mm x 18mm x 25m	172106	6mm x 48mm x 15m
172090	3mm x 24mm x 25m	172108	10mm x 12mm x 10m
172092	3mm x 36mm x 25m	172110	10mm x 15mm x 10m
172094	3mm x 48mm x 25m	172112	10mm x 18mm x 10m
172096	6mm x 12mm x 15m	172114	10mm x 24mm x 10m
172098	6mm x 15mm x 15m	172116	10mm x 36mm x 10m
172100	6mm x 18mm x 15m	172118	10mm x 48mm x 10m

Side Pocket - open

Constructed from white ABS plastic. These open side pockets are designed to mount on flat vertical surfaces allowing quick access at all times. Handy storage with an original equipment appearance.



BLA Code	Outside mm	Cut Out mm	Intrusion mm
173214	546 x 249	495 x 200	115

Side Pockets - Covered

Moulded from white ABS plastic. Designed to be mounted on a vertical flat surface. Front opening door is mounted on stainless steel hinges with a simple friction closure.



173224



173222

BLA Code	Outside mm	Cut Out mm	Intrusion mm
173222	224 x 180	190 x 149	75
173224	546 x 249	495 x 200	115

Tackle Storage Boxes - Three Drawer

White three drawer tackle box. Lid and frame manufactured from white ABS plastic, body from polyethylene. Features large twist action fold out latch, rubber 'O' ring seal and plastic hinges. Drawers are segmented for storage of different size tackle. Available with a choice of lid which either fully covers or half covers the mounting flange of the storage box. For security, an optional key lock set is available.



Half covered lid



173250



173088

BLA Code	Lid Style	Outside mm	Cut Out mm	Intrusion mm	Mount Screws mm
173088	Half	382 x 285	310 x 210	190	6 c/s
173089	Full	386 x 286	310 x 210	190	6 c/s

Accessories:

173250 Optional lock set

Tackle Storage Box - Five Drawer

Five drawer, tackle box suited for mounting in confined areas. Body manufactured from white U.V. resistant polypropylene. Drawers have a clear acrylic hinged lid and are supplied with dividers enabling up to six separate spaces to be formed per drawer.



BLA Code	Outside mm	Cut Out mm	Intrusion mm	Mount Screws mm
173082	187 x 363	140 x 320	150	5 c/s

SSI Lockable Storage Cabinet

- Five Drawer

Recessed cabinet moulded in white, U.V. resistant ABS plastic. Features five large Plano® lidded tackle drawers, full length stainless steel piano hinge and lockable slam action door catch.



BLA Code	Outside mm	Cut Out mm	Intrusion mm	Mount Screws mm
173058	432 x 400	395 x 360	260	5 c/s

SSI Tackle and Storage Boxes

Recessed cabinets are moulded in white, U.V. resistant ABS plastic. Cabinet doors have a full length, stainless steel piano hinge with a simple but effective press closure. Cabinets house standard Plano® tackle drawers for storage of equipment.



173052

BLA Code	Drawers	Outside mm	Cut Out mm	Intrusion mm	Mount Screws mm
173052	2	345 x 192	302 x 150	205	5 c/s
173054	3	340 x 246	300 x 208	212	5 c/s

Storage Lockers - Luran®

Lid and frame moulded from white U.V. treated Luran® which will not yellow with prolonged exposure to U.V. rays. Storage compartment body moulded from polyethylene. Available with a choice of recessed lid which is flush with the storage box flange or a lid which half covers the flange, hiding the fastening holes. Weatherproof when mounted on flat, vertical surfaces. For security, an optional key lock set is available.



173246

BLA Code	Lid Style	Outside mm	Cut Out mm	Intrusion mm
173240	Recessed	380 x 280	310 x 210	209
173242	Recessed	596 x 348	525 x 275	280
173246	Half	382 x 285	315 x 215	190
173249	Full	608 x 354	530 x 280	300

Accessories:

173250 Optional lock set



173240



173250

Jim Black® Access Hatch - Removable Panel

A low profile white access panel designed for installation on any internal or external vertical or horizontal surface which may encounter foot traffic. Featuring high impact U.V. resistant Saralon resin, the heavily reinforced lid includes a non slip surface and is resistant and impervious to harsh chemicals. The lid is completely removable and covers the mounting flange, concealing the fastenings while helping to shed water. The in-laid gasket seal ensures excellent weather proofing while the Saralon resin handles provide a secure closure with a positive stop plus click home lock.

Jim Black
& Associates

Features:

- Totally removable lid
- Hidden fasteners
- Larger inside dimensions
- In-laid gasket ensures an excellent seal
- U.V. resistant Saralon resin for durability
- Handles feature positive stop plus click home lock
- Design naturally sheds water



BLA Code	Outside mm	Inside mm	Cut Out mm
174260	312 x 407	242 x 343	267 x 362

Jim Black® Inspection Plates - Removable Panel

Low profile white inspection plates engineered for harsh environments and suitable for a wide range of vertical or horizontal applications which may encounter foot traffic. Featuring high impact U.V. and weather resistant Saralon resin, the lids include a non slip surface and are resistant and impervious to harsh chemicals. A specially designed crush seal provides excellent water resistance while the lids are easily removed without the use of tools and cover the mounting flange, concealing the fastenings.

Jim Black
& Associates

Features:

- Design naturally sheds water
- Water resistant crush seal design
- Designed for vertical and horizontal applications
- Hidden fasteners
- U.V. resistant Saralon resin for exterior use
- Engineered for the toughest marine environment
- Easy access, requires no tools



BLA Code	Shape	Outside mm	Inside mm	Cut Out mm
174250	Round	153	96	107
174252	Round	203	146	158
174254	Round	254	197	209
174256	Rectangular	229 x 356	172 x 295	183 x 310

Jim Black® Access Doors

A low profile range of white access doors designed for installation on internal or external vertical or horizontal surfaces. Featuring high impact U.V. resistant Saralon resin, the heavily reinforced lid includes a non slip surface and is resistant and impervious to harsh chemicals. The lid hinges through 180° and covers the mounting flange, concealing the fastenings while helping to shed water. Additionally, **173292** and **173294** have been specially designed and engineered to be used in-floor where foot traffic may be expected.

The in-laid gasket seal ensures excellent weather protection while the heavy duty 316 grade stainless steel hinge can be through bolted for added strength. For secure closure the Saralon resin handles feature a positive stop plus click home lock. Specially designed removable plastic storage tubs are available separately and are designed to fit the **173292** or **173294** when mounted horizontally.

Features:

- Hidden fasteners
- Door opens past 180°
- Larger inside dimensions
- 316 grade stainless steel hinge
- In-laid gasket ensures an excellent seal
- U.V. resistant Saralon resin for durability
- Handles feature positive stop plus click home lock
- Design naturally sheds water
- CE certified

BLA Code	Outside mm	Inside mm	Cut Out mm
173290	204 x 369	138 x 303	160 x 326
173292	280 x 381	216 x 318	235 x 337
173294	331 x 432	267 x 369	286 x 388

Accessories:

- 173300** Storage bin to suit **173292**
173302 Storage bin to suit **173294**



173294



173292



Jim Black® Storage Bins - To Suit Jim Black® Access Doors

Specially designed removable plastic storage tubs to fit **173292** or **173294** Jim Black Access Doors when mounted horizontally.

Features:

- Injection moulded and vacuum formed tubs for a lifetime of durability
- Provides a useful additional utility
- Cost effective way to line hatch cut outs
- Unique fastening system makes for an easy installation



173302



BLA Code	Storage Bin to Suit	Depth mm
173300	173292	229
173302	173294	280

Europa Access Hatches

Low profile, injection moulded U.V. stabilised plastic hatches designed for installation on any internal or external flat surface. Reinforced lid with non-skid surface. The lid hinges through 180° and completely covers the mounting flange, concealing the fastenings and deflecting water away from the hatch seal. The seal ensures weatherproofing when the hatch is mounted on vertical surfaces. Contoured handles provide a positive twist lock action and easy lift grip. Protrusion above deck is only 17mm. Intrusion 20mm. Screw holes are 5mm countersunk. Available in a choice of white, grey or black, with or without key security lock.

BLA Code	Colour	Key Lock	Outside mm	Inside mm	Cut Out mm
173312	White	No	283 x 375	192 x 294	200 x 302
173313	Grey	No	283 x 375	192 x 294	200 x 302
173314	White	Yes	283 x 375	192 x 294	200 x 302
173315	Grey	Yes	283 x 375	192 x 294	200 x 302
173316	White	No	375 x 383	294 x 294	302 x 302
173317	Grey	No	375 x 383	294 x 294	302 x 302
173318	White	Yes	375 x 383	294 x 294	302 x 302
173319	Grey	Yes	375 x 383	294 x 294	302 x 302
173320	White	No	470 x 515	378 x 435	386 x 443
173321	Grey	No	470 x 515	378 x 435	386 x 443
173322	White	Yes	470 x 515	378 x 435	386 x 443
173323	Grey	Yes	470 x 515	378 x 435	386 x 443
173324	White	No	363 x 600	272 x 518	280 x 526
173325	Grey	No	363 x 600	272 x 518	280 x 526
173326	White	Yes	363 x 600	272 x 518	280 x 526
173327	Grey	Yes	363 x 600	272 x 518	280 x 526
173326BLK	Black	Yes	363 x 600	272 x 518	280 x 526



Access Hatches - Luran® Recessed Lid

Injection moulded in Luran® plastic for optimum strength, U.V. and weather resistant properties. The lid features a non-skid surface and is recessed flush with the mounting flange, hinging through 100°. Available in a choice of white or grey. An optional key lock set is also available. Designed for mounting on any flat surface, but weatherproof only when mounted on vertical surfaces. Protrusion above deck 11mm. Screw holes 5mm countersunk.



BLA Code	Colour	Outside mm	Inside mm	Cut Out mm	Intrusion mm
173402	White	280 x 380	180 x 280	210 x 310	21
173404	Grey	280 x 380	180 x 280	210 x 310	21
173406	White	348 x 596	244 x 494	275 x 525	25
173408	Grey	348 x 596	244 x 494	275 x 525	25



Accessories:

173250 Optional lock set

Access Hatches - Luran® Covered Lid

Inspection hatches moulded in white Luran® plastic with low profile lid which fully covers the mounting flange, concealing the fastenings and deflecting water away from the hatch seal. The full covered lid opens 180° to lay flat and features a non-skid surface to facilitate deck mounting. Suitable for mounting on any flat surface, weatherproof when mounted on vertical flat surfaces. Screw holes 5mm countersunk. Protrusion above deck 17mm. An optional key lock set is also available.



BLA Code	Outside mm	Inside mm	Cut Out mm	Intrusion mm
173422	286 x 386	196 x 296	210 x 310	31
173426	350 x 600	260 x 510	280 x 530	31
173430	375 x 375	285 x 285	300 x 300	31
173434	465 x 520	375 x 430	390 x 445	31

Accessories:

173250 Optional lock set



Hinged Access Hatches

Manufactured from durable white U.V. resistant ASA plastic and featuring a secure closing mechanism. Diamond pattern non-skid surface provides sure-footedness with under lid reinforcing designed to maximise strength and limit flexing. Can be mounted in either the vertical or horizontal plane, with a weather resistant gasket seal. Twin recessed hinges with heavy duty stainless steel pins open to 90°. Complete with Cut Out template and fastening plugs. Intrusion 19mm.



BLA Code	Outside mm	Inside mm	Cut Out mm
173282	381 x 280	264 x 164	300 x 200
173284	400 x 328	282 x 208	317 x 245
173286	595 x 350	480 x 234	517 x 269

Deck Plates - Stainless Steel

Heavy duty, cast 316 stainless steel deck plate with silicon rubber seal to ensure waterproofing. Supplied complete with stainless steel rod, opening key.



BLA Code	Outside Dia. mm	Inside Dia. mm	Cut Out mm	Intrusion mm	Protrusion mm
174302	88	54	63	12	3
174310	145	105	115	12	4

Deck Plates - Bronze

Heavy duty cast construction. Complies with most Australian Survey Standards. Supplied complete with cast bronze opening key. Low profile 5mm protrusion.



BLA Code	Finish	Outside Dia. mm	Inside Dia. mm	Cut Out mm	Intrusion mm
174304	Bronze	140	95	108	17

Whale® Watertight Locker

Doors - Polypropylene

Locker doors provide a reliable watertight seal. Raised screw down lid. Easy to open via the maximum diameter external grip. Moulded from black polypropylene with a choice of black or clear lid. Wide caulking flange enhances waterproofing.



BLA Code	Lid Colour	Outside Dia. mm	Inside Dia. mm	Mount Screws mm
174240	Black	235	180	5 r/h
174242	Clear	235	180	5 r/h

Deck Plates - Alloy

Heavy duty cast construction. Complies with most Australian Survey Standards. Supplied complete with cast alloy opening key.



BLA Code	Outside Dia. mm	Inside Dia. mm	Cut Out mm	Intrusion mm	Protrusion mm
174308	140	95	108	17	5
174328	208	145	159	22	5

Inspection Ports - Full Cover

Flush style inspection port with full cover lid. The lid conceals the deck flange and fastenings as well as deflecting water away from the seal and screw holes, for improved weather resistance. Moulded from high density polymer with a textured finish.



BLA Code	Colour	Outside Dia. mm	Inside Dia. mm	Cut Out mm	Mount Screws mm
174230	Black	210	152	163	4 c/s
174234	White	210	152	163	4 c/s

Inspection Ports - ABS

Flush style, economical inspection ports moulded from U.V. stabilised high impact, chemical resistant, ABS (acrylonitrile/butadiene/styrene). Screw in centres with recessed finger grips. Integral 'O' ring seal for weatherproofing. Wide caulking flange.



BLA Code	Colour	Outside Dia. mm	Inside Dia. mm	Cut Out mm	Mount Screws mm
174204	White	145	102	112	4 c/s
174206	Black	145	102	112	4 c/s
174214	White	173	127	137	4 c/s
174216	Black	173	127	137	4 c/s
174224	White	207	152	164	4 c/s
174226	Black	207	152	164	4 c/s

Inspection Ports - Polypropylene ABS

Moulded nylon construction with screw in centres, weatherproofing 'O' ring seal and wide caulking flange. Available in three sizes with a choice of black or white with solid or clear centres. Some models are available complete with a storage bag ideal for wallets, keys and similar.



BLA Code	Colour	Centre Cover	Outside Dia. mm	Inside Dia. mm	Cut Out mm	Mount Screws mm
174004	White	White	145	102	112	5 c/s
174006	Black	Black	145	102	112	5 c/s
174008	White	Clear	145	102	112	5 c/s
174010	Black	Clear	145	102	112	5 c/s
174014	White	White	171	130	139	5 c/s
174016	Black	Black	171	130	139	5 c/s
174018	White	Clear	171	130	139	5 c/s
174020	Black	Clear	171	130	139	5 c/s
*174021	White	White	171	130	139	5 c/s
*174022	Black	Black	171	130	139	5 c/s
174024	White	White	196	152	164	5 c/s
174026	Black	Black	196	152	164	5 c/s
174028	White	Clear	196	152	164	5 c/s
174030	Black	Clear	196	152	164	5 c/s
*174032	White	White	196	152	164	5 c/s
*174034	Black	Black	196	152	164	5 c/s

Accessories:

174070	'O' ring seal	102mm
174074	White lid only	102mm suit 174004
174076	Black lid only	102mm suit 174006
174078	Clear lid only	102mm suit 174008/10
174080	'O' ring seal	130mm
174082	White lid only	130mm suit 174014/21
174084	Black lid only	130mm suit 174016/22
174090	'O' ring seal	152mm
174094	White lid only	152mm suit 174024/32
174096	Black lid only	152mm suit 174026/34

* These models supplied with storage bag

Louvre Vents - Stainless Steel 'V'

Ideal for engine compartments. Raised 'V' louvres. Available in three and five louvre configurations. Pressed stainless steel construction with mounting flange.



175003



175005

BLA Code	Louvres	Outside mm	Cut Out mm	Intrusion mm	Protrusion
175003	3	210 x 112	187 x 90	26	15
175005	5	325 x 112	303 x 90	26	15

Louvre Vents - Plastic

Clean contemporary style, moulded ASA plastic construction. Available in a choice of colour finish. Surface mount.



175122



175120

BLA Code	Colour	Length mm	Width mm	Intrusion mm	Protrusion mm
175120	Black	447	70	19	17
175122	White	447	70	19	17

Louvre Vent - Rectangular Plastic with Screen

Moulded, plastic vent with integral insect screen. Surface mount.



BLA Code	Width mm	Height mm	Protrusion mm	Mount Screws mm
175214	200	157	14	3 c/s

Louvre Vents - Stainless Steel Flat Top

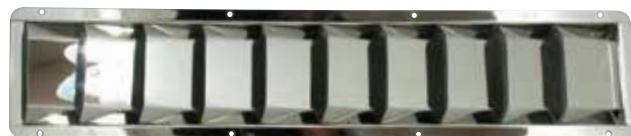
Pressed stainless steel construction with mounting flange. Raised flat top louvres. Ideal for engine compartments. Available in four, six and ten louvre configurations.



175024



175026

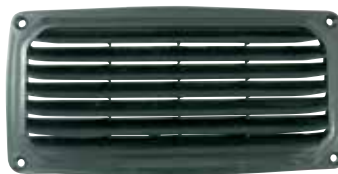


175010

BLA Code	Louvres	Outside mm	Cut Out mm	Intrusion mm	Protrusion
175024	4	210 x 112	187 x 90	26	12
175026	6	325 x 112	303 x 90	26	12
175010	10	530 x 112	506 x 90	26	12

Louvre Vents - Plastic

Moulded in ABS plastic with raised louvres. Surface mount.



175216



176028



175220

BLA Code	Colour	Width mm	Height mm	Protrusion mm	Mount Screws mm
176028	White	86	86	16	4 c/s
176030	Black	86	86	16	4 c/s
175216	Black	200	100	9	4 c/s
175220	Black	258	125	16	5 c/s

Louvre Vent - Plastic Round with Screen

Moulded, plastic vent with integral insect screen. Recessed mounting with push to fit fixing.



BLA Code	Outside mm	Cut Out mm	Intrusion mm	Protrusion mm
175212	120	97	15	5

Louvre Vents - Stainless Steel Low Profile

Pressed, polished stainless steel, low profile raised louvres. Surface mount.



175242



175230



175234



175238

BLA Code	Louvres	Height mm	Width mm	Protrusion mm	Mount Screws mm
175230	3	65	127	3.5	3 c/s
175234	6	115	127	3.5	3 c/s
175238	2 x 6	115	232	3.5	3 c/s
175242	14	227	127	3.5	3 c/s

Louvre Vent - Stainless Steel Rolled Edge

Highly polished, pressed 316 grade stainless steel raised louvre vent with rolled edges for extra stiffening, no sharp corners and better appearance. Surface mount.



BLA Code	Height mm	Width mm	Protrusion mm	Mount Screws mm
175248	122	127	10	4 c/s

Louvre Vent - Stainless Steel Round

Pressed stainless steel round vent with raised louvres. Surface mount.



BLA Code	Diameter mm	Protrusion mm	Mount Screws mm
175204	102	3	3 r/h

Midget Clam Vents - Stainless Steel

Mini clam shell vent made from pressed stainless steel. Ideal for covering anchor well drains, through transom wiring, and similar applications.



175302

BLA Code	Length mm	Width mm	Height mm	Mount Screws mm
175302	40	45	11	3 r/h
175304	55	57	14	3 r/h

Compact Clam Vent - Stainless Steel

Square edged cover for air inlet or outlet. Polished, pressed stainless steel construction.



BLA Code	Length mm	Width mm	Height mm	Mount Screws mm
175310	145	114	50	3 c/s

Clam Vents - Stainless Steel

Curved cover for air inlet or outlet. Polished, pressed stainless steel construction.



BLA Code	Length mm	Width mm	Height mm	Mount Screws mm
175320	172	146	57	3 r/h
175322	185	172	71	3 r/h

Marine Town® Cowl Vent - Stainless Steel

Injection moulded black plastic base with integral tail to suit 75mm ID flexible blower hose and a highly polished, pressed 316 grade stainless steel cowl. Cowl mouth has a rolled edge for safety and added stiffness.



BLA Code	Length mm	Width mm	Protrusion mm	Intrusion mm	Mount Screws mm
175328	130	148	52	50	3 r/h

Mushroom Vent - Plastic

White moulded plastic, screw action ventilator with brass spindle. Plastic insect screen incorporated in base.



BLA Code	Outside Dia. mm	Inside Dia. mm	Height Open mm	Height Closed mm	Mount Screws mm
175354	148	94	70	30	5 c/s

Marine Town® Dorade Dome Vent

Dome shaped, white moulded ABS plastic cover that will not snag ropes and crew. Internal clear mushroom vent controls air flow, acts as dorade to protect against water entry and allows light in. Supplied complete with 'O' ring deck seal and internal dress ring.



BLA Code	Overall Dia. mm	Height mm	Deck Cut Out mm	Mount Screws mm
175370	200	62	100	100

Marine Town® Butterfly Vents - Stainless Steel

Highly polished pressed 304 grade stainless steel butterfly vents with chrome plated brass, side mounted knob which controls the rear overlapping plate to vary the ventilation gaps.



BLA Code	Overall Diameter mm	Protrusion mm	Mount Screws mm
175348	102	19	3 r/h
175350	127	19	3 r/h

Dorade Cowl Vent - Plastic

Moulded from white, U.V. stabilised, ABS plastic. Designed to be mounted horizontally, this combination cowl vent and dorade box directs air below, while the internal baffle design protects against water entry.



BLA Code	Length mm	Width mm	Height mm	Deck Cut Out mm	Mount Screws mm
175360	194	149	110	76	5 r/h

Low Line Cowl Vents

Economical, moulded, white flexible PVC cowl with red interior. Features a 360° swivelling cowl that either snaps or screws on and off the deck plate. It can be removed and replaced with screw-in 'foul weather' cap (included).



BLA Code	Cowl Type	Base Dia. mm	Inside Dia. mm	Height mm	Mount Screws mm
175404	Snap on	110	63	105	4 c/s
175406	Screw on	140	84	140	6 c/s

Solar Exhaust Vents - Economy

Economical and effective solar exhaust vents which will extract up to 19m³/hr in bright sunlight. No wiring or batteries required. Mounts directly onto deck at almost any angle or surface. Available in white ABS plastic or with stainless steel cover. Supplied with mounting gasket, trim ring and fastenings.



BLA Code	Finish	O.D. mm	Height mm	Cut Out mm
175376	White	215	50	120
175378	S/Steel	215	33	120

Nicro™ MiniVent 1000



Smallest and most economical solar vent in the Nicro™ range. Compact yet effective, the MiniVent is an exhaust vent only, but it will keep the boat cabin cool, even on the hottest days, with passive exhaust at night. Under solar power it will move over 19m³/hr. Built-in shut off damper prevents water intrusion in rough seas. Whisper quiet fan operation. No wiring or batteries required. Mounts directly onto deck. Available in white ABS plastic or with stainless steel cover.



BLA Code	Finish	Overall Dia. mm	Height mm	Vent ID mm
175390	White	175	41	78
175391	S/Steel	200	41	78



Nicro™ Deck Plate



Complete with snap-in watertight cover. Use with any Nicro™ snap-in system and Nicro™ solar vents.



BLA Code	Inside Dia. mm
175399	100



Nicro™ Day/Night Plus Solar Vents - Stainless Steel



The Day/Night Plus is a 24 hour solar vent. This model combines a rechargeable battery with advanced solar cell technology to provide round-the-clock ventilation. Air movement for the Day/Night Plus is up to 28m³ (1,000 ft³) per hour for 175385 and 17m³ (600 ft³) for 175384.

Features:

- 24 hour operation
- No wiring required; integral switch
- Full shut off from below prevents water intrusion
- Whisper quiet fan operation
- Mounting hardware, interior trim and insect screen included



BLA Code	Overall Dia. mm	Height mm	Vent ID mm
175384	230	50	76
175385	230	50	100



SPX Bilge Blowers - AirV Extra Heavy Duty

SPX

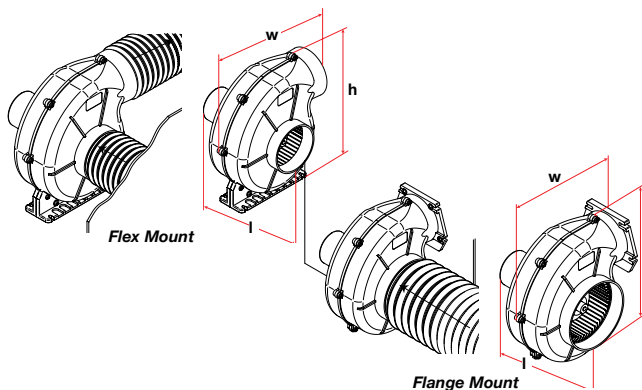
Marine radial blowers designed for engine compartment ventilation prior to start up. AirV heavy duty blowers are designed for air intake or extraction in bilges, galleys, accommodation and other compartments. Flange Mount and Flex Mount design with double ball bearing motor. High-impact anti-shock ABS body for AirV 3 and Nylon, glass-fibre reinforced body for AirV 4. Shaft and screws in stainless steel, consistently rated.



176060

176064

176074



BLA Code	Description	Power		Mount	Capacity		Dimensions H x W x L mm	Port Connections	
		v	amp		m ³ /h	cfm		Inlet mm	Outlet mm
176060	AirV 3-280	12	3.9	Flange	280	163	198 x 171 x 195	Ø75	92 x 80
176062	AirV 3-280	24	2.5	Flange	280	163	197 x 173 x 195	Ø75	92 x 80
176064	AirV 4-550	12	12.5	Flange	550	324	277 x 259 x 160	Ø100	146 x 118
176066	AirV 4-550	24	7	Flange	550	324	277 x 259 x 160	Ø100	146 x 118
176068	AirV 4-750	12	14.5	Flange	750	441	277 x 257 x 181	Ø150	146 x 118
176070	AirV 4-750	24	8.5	Flange	750	441	277 x 257 x 181	Ø150	146 x 118
176072	AirV 4-1000	24	15.5	Flange	1000	589	278 x 258 x 203	Ø150	146 x 118
176074	AirV 4-550	12	12.5	Flex	550	324	296 x 257 x 161	Ø100	Ø110
176076	AirV 4-550	24	7	Flex	550	324	296 x 257 x 161	Ø100	Ø110
176078	AirV 4-750	12	14.5	Flex	750	441	297 x 257 x 182	Ø150	Ø110
176080	AirV 4-750	24	8.5	Flex	750	441	297 x 257 x 182	Ø150	Ø110
176082	AirV 4-1000	24	15.5	Flex	1000	589	296 x 257 x 201	Ø150	Ø110

Bilge Blowers

Flange mounted bilge blowers to suit 75mm ID ventilation hose. Produce air flow of 2800 litres per minute. Spark proof. Suitable for intermittent use only. A mounting flange is available to enable through bulkhead or deck mounting with a tail for the ducting hose.



(B)

(A)



BLA Code	Power		Width mm	Height mm	Depth mm	Mount Screws mm
	v	amp				
(A) 176004	12	3	182	160	142	5 r/h
(A) 176006	24	1.5	182	160	142	5 r/h

Accessories:

(B) 176040 75mm blower hose mount flange

TMC Bilge Blowers - In-line

High impact, white ABS plastic housing. In-line installation to suit 75mm (3") ducting hose. Produce air flow of 2800 litres per minute. For intermittent use only.



176014



BLA Code	Power		Overall Length mm	Width mm	Height mm	Mount Screws mm
	v	amp				
176014	12	4.5	210	135	110	5 r/h
176016	24	2.5	210	135	110	5 r/h

Bilge Blowers - Turbo In-line

Up to 25% more efficient than conventional in-line blowers. Motor draws fewer amps, with less strain resulting in improved reliability. The worlds first water resistant blower design with durability proven in rigorous moisture tests. NMMA approved. White ABS plastic housing. Intermittent use only.



BLA Code	Power		Intake lpm	Length mm	Width mm	Height mm
	v	amp				
176011	12	2.6	2830	75	126	92
176013	12	2.5	3540	100	126	115

Louvre Vents - Stainless Steel with Tail

Injection moulded black plastic base with highly polished, pressed 316 grade stainless steel louvred vent face plate. Base includes an integral tail to accept flexible blower hose. The louvred face plate features rolled edges for extra stiffening, no sharp corners and is fastened to the plastic base using heavy duty adhesive tape for no visible fastening appearance.



176024

BLA Code	Length mm	Width mm	Height mm	Mount Screws mm
176024	75 & 100	122 x 127	10	120
176026	100	122 x 127	10	60

Louvre Vents - Plastic with Tail

Moulded ABS plastic louvre vent with hose tail to suit 75mm or 100mm ventilation hose. Available in black or white.



176032



176034



176035

BLA Code	Colour	Suits Hose mm	Vent Face mm	Protrusion mm	Intrusion mm
176032	White	75	86 x 86	16	61
176034	Black	75	86 x 86	16	61
176035	White	100	127 x 127	19	31

Shields Blower Hose - PVC

White, wire-reinforced spiral blower hose to suit 75mm (3") and 100mm (4") tails on blowers and vents. Supplied in a 15 metre length.



176038

BLA Code	Diameter	
	mm	in
176038	75	3
176039	100	4

Fan - Oscillating

Multi-adjustable, white plastic base with integral toggle switch, white plastic motor housing, clear plastic three blade fan and chrome plated fan guard. 60° sweep angle, switchable on motor housing. Supplied with 2 metre lead fitted with cigarette lighter type plug.



BLA Code	Volts	Amps	Guard Dia. mm	Height mm	Depth mm
176104	12	1.2	180	240	160

Webasto Reverse Cycle Air Conditioning



A range of whisper quiet reverse cycle cooling and heating AC air conditioning units by Webasto designed and manufactured for the harsh marine environment. Ranging from 5,000 to 24,000 BTU/h, each unit offers compact, highly efficient air conditioning for a wide range of vessel applications and sizes. Each balanced system features an ultra silent compressor that has been securely mounted onto a heavy duty stainless steel chassis for rigidity with extra deep condensation tray resulting in greatly reduced unwanted noise and vibration that can transfer into cabins. All critical components are finished in baked enamel for extended product life while the multi-port inlet evaporator has been anodised for superior corrosion protection. For effective vessel cooling or heating the high velocity 360° rotatable heavy duty blower is designed to feed air to multiple vents.

Each air conditioning unit is supplied complete with ducting collar, remotely mounted power control connection box, air filter, digital wall mount control and hand remote control. Available as unit only or complete kit, which includes applicable water pump and priming valve, through hull fitting and valve, supply and return air grilles, transfer box, hose ring and three metres of flexible air ducting.

For installation or re-fits a range of supply and return grilles, transition boxes and insulated ducting is available.

Features:

- Compact and designed exclusively for marine use
- Reverse cycle cooling and heating
- Ultra quiet compressors mounted to minimise vibration and noise
- Stainless steel chassis with deep condensation tray
- Critical components finished in baked enamel for extended life
- Multi-inlet port evaporators anodised for corrosion protection
- Uses environmentally friendly R-410A refrigerant
- Replaceable air filter
- High velocity three speed 360° rotatable blower
- Digital wall mount and hand remote control supplied as standard
- Range of accessories available including grilles and ducting, refer to page 413
- 12 months swap out warranty



Standard Inclusions



Complete kit units include applicable water pump and priming valve, through hull fitting and valve, supply and return grilles transfer box hose ring and flexible ducting



179558



BLA Code Unit Only	BLA Code Complete Kit	Capacity BTU	Voltage	Frequency Hz	Average Load A	Suggested Air Supply cm ²	Suggested Air Return cm ²	Blower Output m ³ /h	Ducting Collar Dia. mm	Condenser Connection Dia. mm
179550	179570	5000	230	50/60	2.2	103.2	316	479	102	16
179552	179572	9000	230	50/60	3.2	103.2	413	584	102	16
179554	179574	12000	230	50/60	4.5	129	645	696	127	16
179556	179576	16000	230	50/60	5.5	154.8	780.6	858	127	16
179558	179578	24000	230	50/60	12.3	2 x 323	1084	2 x 550	2 x 127	16



179550/70



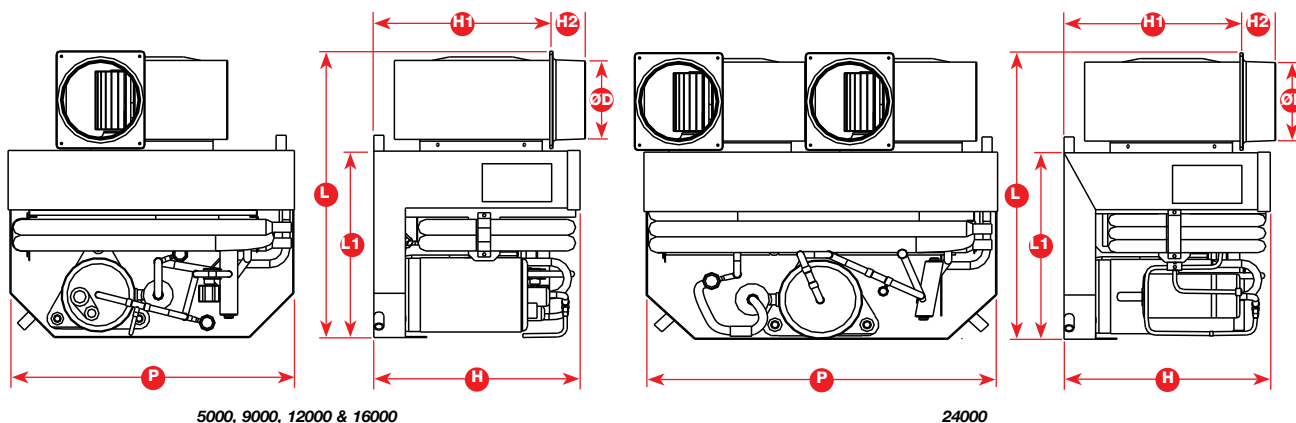
179552/72



179554/74



179556/76



BLA Code	H mm	H1 mm	H2 mm	P mm	D mm	L mm	L1 mm	Weight kg
179550/70	295	260	54	285	102	408	280	23
179552/72	310	260	54	380	102	408	280	26
179554/74	330	290	54	380	127	438	280	31
179556/76	330	290	54	450	127	454	295	33
179558/78	386	326	56	595	127	529	387	60

Webasto Air Conditioning Accessories

For original installation or re-fits where outlets and intakes may need to be repositioned, a selection of accessories are available.

The range of supply and return grilles include plastic or teak in fixed, adjustable or four way. Transition boxes include back entry and no entry, while insulated ducting and attachment rings are available to complete the system.

BLA Code	Description	Material	Colour	Blade Type	Dimensions W x H mm
179600	Grille Supply	Plastic	White	Adjustable	254 x 102
179606	Grille Supply	Plastic	White	Fixed	254 x 127
179620	Grille Supply	Teak	-	4 Way	254 x 102
179626	Grille Supply	Teak	-	4 Way	254 x 127
179630	Grille Return	Plastic	White	Fixed	254 x 203
179636	Grille Return	Plastic	White	Fixed	305 x 305



Plastic Grille
Fixed or adjustable vents

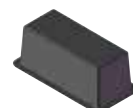


Teak Grille
4 way adjustable vents

BLA Code	Description	Type	Connection	Dimensions W x H mm
179650	Transition box	Back entry	Round	254 x 102
179656	Transition box	No entry	Blank	254 x 127



Transition box
Back entry



Transition box
No entry

BLA Code	Description	Dia. mm	Length m
179660	Oval ring	100	-
179666	Oval ring	125	-
179682	Insulated ducting	127	3



Oval ring



Insulated ducting

Typical Installation

